

Jeanie Hess

Metc143

26 March 2018

Rockwell Hardness Test Procedure

Safety:

- Take note of *warning* and *caution* signs on and around equipment.
- Do not modify or disassemble given equipment.
- No not have water on or around equipment.
- Ensure proper handling with electricity ie. Grounding and proper voltage.
- Ensure proper stability.

**** In case of emergency: kill power and make proper calls****

Set up:

Accessory box should include:

- Power cord
- Diamond indenter
- Steel ball
- Steel ball indenter
- Five hardness test blocks

Equipment:

Operation switch

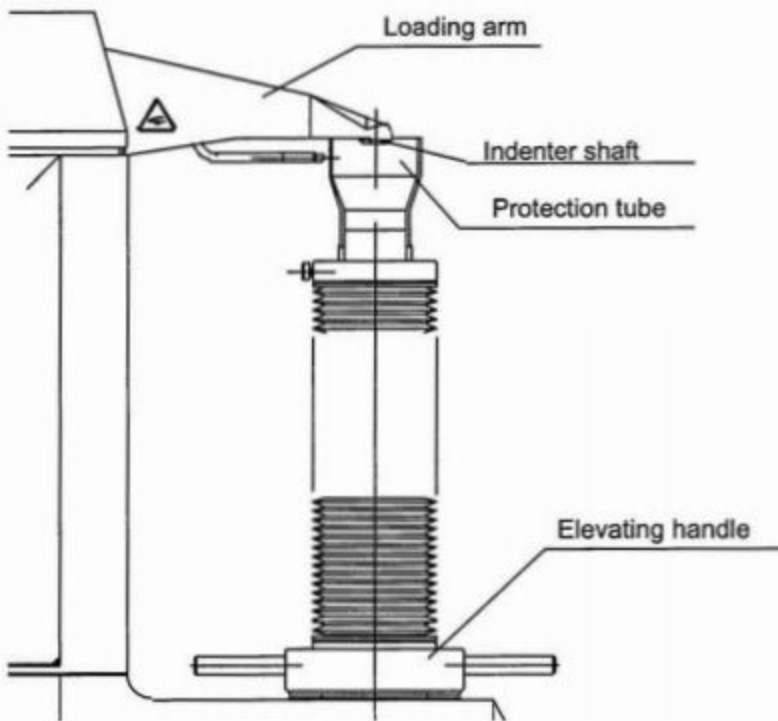
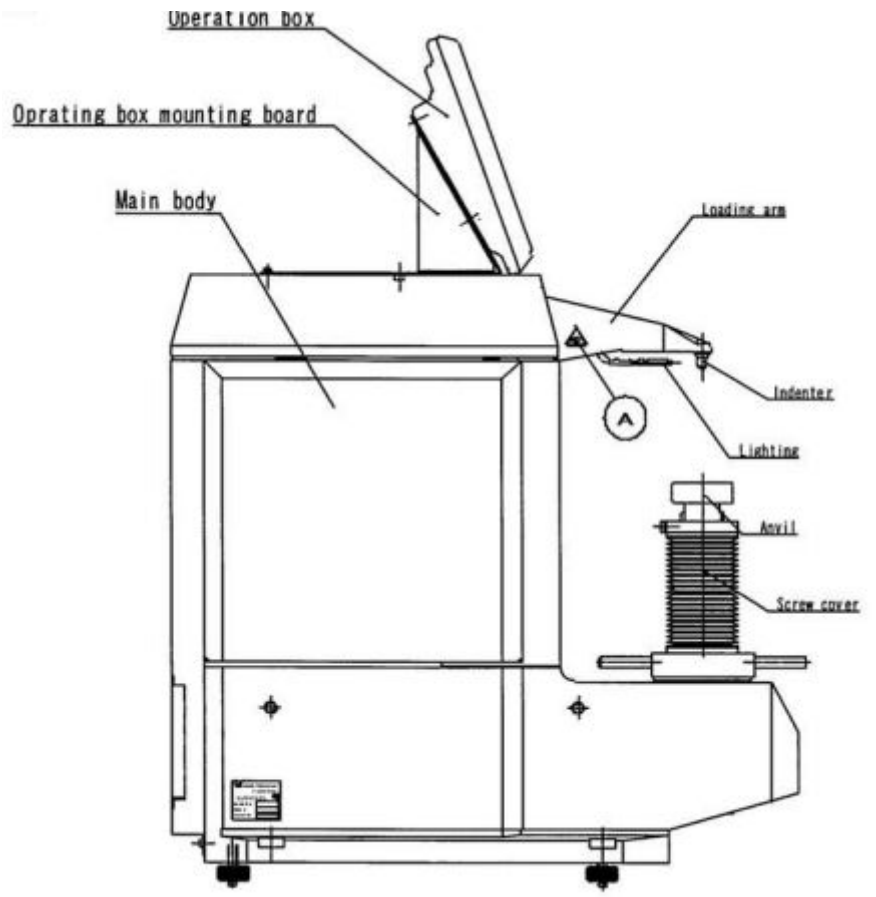
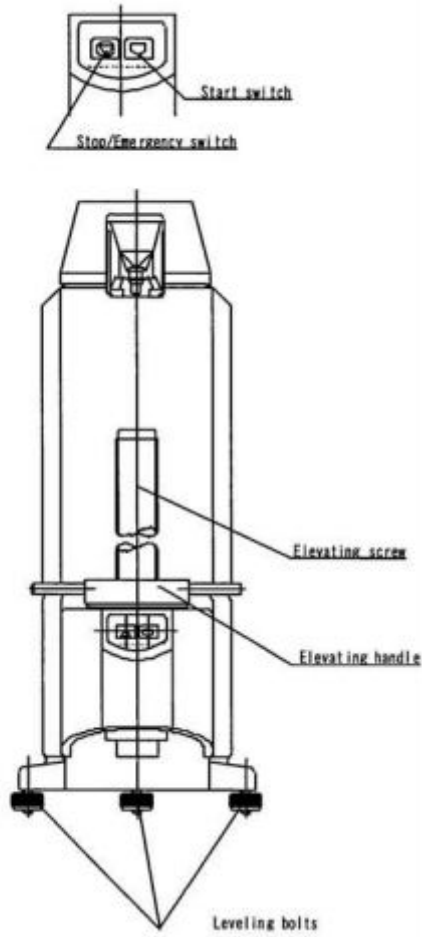


Fig.2

Procedure: **Rockwell Test Mode**

Manual Test:

1. The mode display screen will be in this mood as a default.
2. Set specimen on table
3. Change the height of the specimen using the elevating handle
4. Once specimen reaches the indenter and the test starts to continue on its own, remove hand from handle
5. During this time:
 - a. The force will increase as indicated by first timer to create first test force
 - b. Once the first test force has been measured by the machine, the force will increase to the next force to be measured. The second timer will go off.
 - c. At this point the force will decrease the take the next measurement. Then the last time will go off.
 - d. When the automated process is over the message on the screen will display “Lower the table”
6. At this time, using the elevation arm again you may lower the table.